

**Minutes of the State-Level SRI Symposium**  
held 29 December 2008 at Hotel Patliputra Ashok, R Block, Patna, Bihar  
Organized by: BASIX, supported by Women Development Corporation

On 29<sup>th</sup> December 2008, a State-Level Symposium on System of Rice Intensification (SRI) was organized for the first time in Bihar. It was the collaborative effort of Indian Grameen Services (IGS), BASIX Bihar, and Women Development Corporation, Patna. The main objective of the workshop was to share the experiences of promoting System of Rice Intensification (SRI) in Bihar.

The symposium witnessed high participation of more than 135 participants from across the state. The key participants were representatives from WDC; BASIX; Principal Secretary Welfare; Principal Secretary Cooperatives; Director of Agriculture; CGM NABARD; National Food Security Mission; Rice Research Directorate; the agricultural university; and various other representatives from state government departments, NGOs, NABARD, Bihar Rural Livelihood Promotion Society (BRLPS), Sir Dorabjee Tata Trust (SDTT), SHG federations, academicians, scientists, SRI farmers, and resource persons on SRI. (for details see annex). Ms. Irina Sinha, Project Director, WDC, facilitated the workshop, and it was chaired by Ms. S. Sidhoo, Principal Secretary, Welfare and Chairman-cum-MD, WDC.

### **Session 1 (10:40 to 11 am): Welcome & Inauguration**

Ms. Irina Sinha, Project Director, WDC, welcomed all the participants and invited the chief guest, Ms. S. Sidhoo, Principal Secretary, Welfare Department and Chairman-cum-MD, WDC, to inaugurate the symposium by lighting the lamp along with leaders of SHG Federations who played an active role in promoting SRI in the state. After welcome and lamp lighting, Ms. Irina Sinha set the agenda of the workshop.

Ms. Sinha, Project Director, shared that after piloting SRI involving women-owned SHG Federations with technical support from BASIX, the experiences have been quite positive, and many more farmers (men and women) are now willing to adopt SRI techniques of rice cultivation. BASIX and WDC are committed to promote SRI on a large scale to ensure food security among the poor households in Bihar, and they wish to build a common understanding and synergy among various other stakeholders through this symposium. Ms. Sinha also shared that agriculture has largely been dependent on women's labour. However, in the use of technology, male members of the household usually get preference. Therefore, there is need to train and involve women in the use of farming technology and recognize the vital role of women as farmers. Thus, she set the agenda of the workshop as follows:

1. Experience sharing on SRI (production and processes involved)
2. Role of institutions with a focus on women's SHG federations in promoting SRI.
3. How to scale up SRI in the state and build synergy among stakeholders.
4. Bridging the gap among men and women farmers by training women farmers in improved agricultural practices and hence improve their decision-making.

To set the stage, a movie on SRI farming in Bihar implemented by IGS was shown to the participants. The movie featured the experiences of farmers in adopting SRI for the first time, the process of promoting SRI among farmers, and the important role that women and women-owned federations have played.

## **Session 2 (11 to 11.15 am): Experience-sharing by SHG Federation leaders and farmers**

In this session, farmers and service providers (who regularly visited farmers and guided them in implementing SRI PoP) shared their experiences of practicing and promoting SRI for the first time.

Ram Shekar, a farmer from Mohanpur block in Gaya district, shared how by adopting SRI methods he was able to save Rs.17, 000-18,000/per acre. He cultivated 2 acres of land through SRI techniques and only 4 kgs of seed was needed.

Sharda Devi, service provider from Mohanpur, Gaya district, shared that farmers have a double benefit from SRI. Firstly, cost reduction for inputs and secondly, increased rice yield. She is also the president of Mohanpur SHG federation. Through her federation, she was able to promote SRI among 90 farmers of the area. She also shared that initially, farmers and women were not sure about the benefits of the technique. However, with persuasion from IGS, some of the women got moral support to adopt it and test the results. Now after harvesting the benefits, women are very positive about the technique, and more farmers are now willing to adopt it.

Indu Devi, service provider in Makhdumpur block of Jhahanabad district, shared how farmers in the area were concerned about how to increase their yield of rice. With the introduction of SRI, farmers got benefit by reductions in seed and input cost and an increase in yield. Through her federation, she was able to promote SRI among 70 farmers on 70 acres of land. These farmers have used 2 kgs of seed per acre. After seeing the good results, other farmers are also willing to adopt it.

Radhika Devi, of Koch federation in Gaya district, and Rupa Khatoon, president of Mala Nari Shakti Shakari Samiti Ltd, in Motihari block, shared the same experiences.

One of the common views shared by all the participants in this session was that while IGS charged a service fee for handholding them in SRI implementation, the amount is meager compared to the benefits they got. Initially they were not convinced about the service fee, but after seeing the results from service delivery of IGS, they think that service charge is justified.

### **Session 3 (11.15 am to 11:40 am): Opening remarks on role of women in ensuring food security in Bihar**

In this session, guest speakers were **Shri Atanu Thakur, Sr. Lecturer**, Kolkata University and **Shri Arvind** from **National Food Security Mission** in Bihar. Shri Thakur presented his views on Gender and Agriculture in the context of ensuring food security. He said that food security is much talked about in India as food production has reached a plateau. In addition, the demand is rising with increasing population. The production of food grains has not increased in proportion to rise in demand. However, for food security, only increasing food production is not the answer. It is one aspect of the challenge. There is a huge population in India having only one meal a day (in India, 37% of population live with \$1 per day). Thus, affordability and access to food grains is the most critical consideration for food security.

How can we achieve food security when access is the major concern? Now, if we focus food security from women's perspective, their situation is very vulnerable. Women are active partners in cultivation. In the household, they provide food to all. In our patriarchal society, the norm is "food first to male member". The women in the household get the residual food. Therefore, there is need to look at food security from a household perspective. Then techniques like SRI are required to ensure food security. When household production is low, women suffer more than men. Therefore, if there is increase in household yield, then there are better chances of food security for women.

Secondly, he raised a concern of the role of the state in providing land ownership to women. It is very important to have institutional arrangement for providing endowments, and entitlements for women to take up cultivation. Thus, the state government role is critical in food security of household.

**Shri Arvind, National Food Security Mission**, gave information regarding various schemes to farmers under Rastriya Khad Surakha Mission. Under National Food Security Mission, 25 districts in Bihar are selected for wheat, 36 districts for rice, and 13 districts for pulses. He said that SRI is good for increasing per unit land productivity. He shared that farmer's practicing SRI can avail themselves of monetary assistance benefits under Rastriya Khad Surakha Mission:

- Incentive for purchase of cono weeder: Rs.3000 per farmer, or 50% of cost, whichever is less.
- Assistance for purchase of weeder: Rs.3000 per farmer, or 50% of cost, whichever is less.
- SRI demonstration plot: Rs.3000/.
- For quality seed: Rs.2500/ He added that for promoting SRI, soil test and its treatment is important.

## **Session 4 (11:45 to 12 pm): Presentation on National-Level Scenario in SRI and SDTT's Focus Areas**

Shri Biswanath Sinha, Senior Programme Officer, SDTT, presented the national-level scenario on SRI, concerns to be addressed, and SDTT's focus in SRI. The important facts from the presentation were:

- System of Rice Intensification was first developed in Madagascar during 1980s.
- In India, it came during 2000-01.
- In the year 2007, SDTT developed a Human Development Index map. Based on this mapping, SDTT's focus area for 2007-2012 is to promote food security of small and marginal farmers in poverty-stricken communities.
- In 2006, SDTT worked with 5 agencies in Jharkhand and West Bengal.

The strategy adopted by SDTT to promote SRI is:

- Focus on rainfed areas (small & marginal farmers).
- Policy advocacy at State and National levels
- Promote innovations in SRI.

In Orissa, SDTT had worked with 1,815 farmers (through different agencies), mostly small and marginal farmers.

The various concerns identified after piloting SRI in Orissa, Jharkhand and West Bengal were:

- Weeder and marker were not working properly.
- Non-availability of organic alternatives.
- Natural disasters like floods in Assam and Orissa, drought in Jharkhand.
- HR development to scale up SRI. Developing and training master-trainers.
- Awareness building, cross learning, and promoting innovation in SRI.

### ***National Level SRI Scenario:***

- In India, 164 districts have adopted SRI. All the districts identified by National Food Security Mission have been reached.
- During Kharif season in 2008, 1 lakh hectares of land were under SRI in India. It was mostly in states of Tripura and Tamilnadu. The governments of both the states have promoted SRI very enthusiastically.
- The central government has also given instructions to states to adopt SRI. The major areas of concern have been:
  - Quality control in SRI.
  - Alliance between government, donors, NGOs, universities, research organizations, etc.

SDTT has planned to set up national level secretariat for SRI.

### ***12:05-12:20 Tea Break***

**Session 5 (12:25 to 13:25 pm): Panel Discussion on Institutional Arrangements for Involving Women in Agriculture-based Livelihoods.**

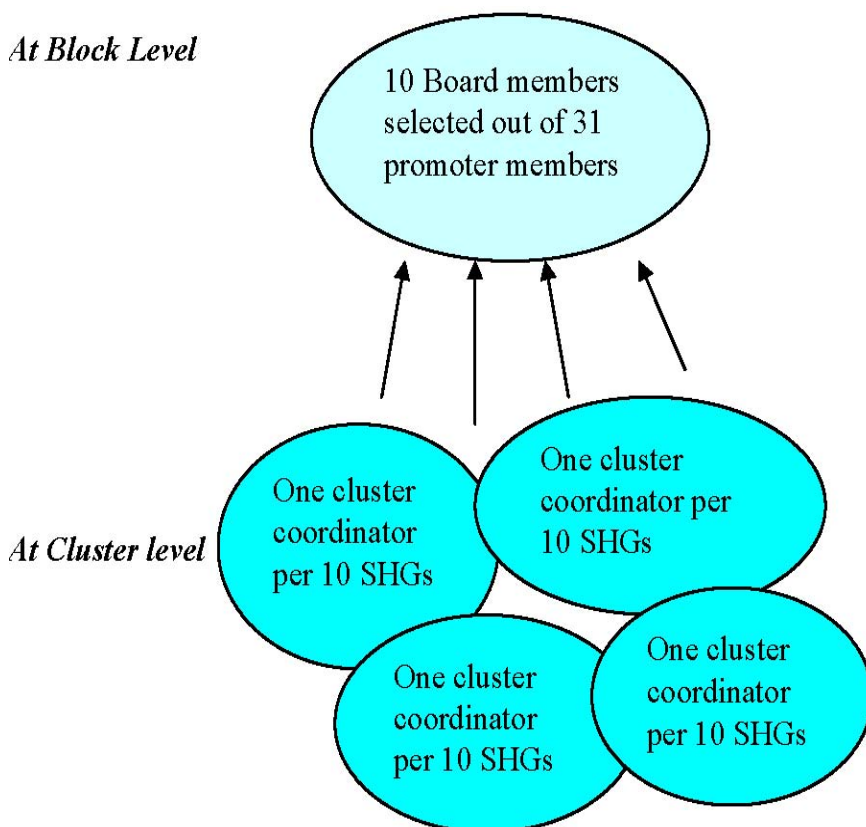
**Chairman of the Panel:** Shri Vijay Prakash, Principal Secretary, Cooperatives, GOB  
**Panel Members:**

- Mr. Pradeep Ghosal, SPM, WDC
- Ms. Sabarmati, SAMBHAV, Orissa
- Shri Kamlesh, SPM, BRLPS, Patna
- Ms. Asha, NABARD, Patna
- Shri Murli, APMAS, Hyderabad.
- Shri Sanjay Kumar, IGS, BASIX Patna

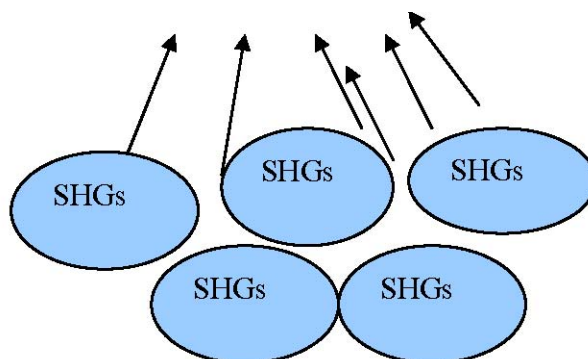
Shri Pradeep Ghosal, State Project Manager, WDC, Patna, gave a brief overview of the structure of SHG Federation promoted by WDC through which IGS has piloted SRI. Women Development Corporation is working in 22 districts, 118 blocks, 1,238 panchayats, 3,687 villages and 1,471 clusters. The block-level federations are registered under 1996 Self-Supporting Co-operative Act. The structure of the SHG federation is shown below:

***Structure of Block Level Federation***

*At Block Level*



*At Village Level*



He also explained the Federations' decision-making process in promoting SRI in their area. At first, IGS and WDC shared the concept of SRI among co-operative members. Once some members got interested, it was presented in the board meeting. The board members discussed in length about the benefits of SRI with IGS representative. After the board members were convinced of piloting SRI in their area, the board passed the resolution to promote SRI among members. Some of the presidents and board members of federations were trained in SRI PoP implementation. They acted as service providers to SRI farmers on behalf of the federation under the guidance of IGS. IGS trained the service providers and guided farmers in practicing SRI technique.

The chairperson proposed that each panel member present his or her views on the topic and then he would sum up the discussion.

**Ms. Sabarmati** said that it is very paradoxical that these days women are focused on more than men. However, when certificates are awarded to farmers for SRI, it is in the name of the men of the household and not of the women members. She raised the concerns of rural women. The first institution starts at home. In household, everything revolves around women, but they are given least respect. They are last to eat. In agriculture also, women are active participants but when it comes to training, the focus is on men. She stressed that while promoting SRI, women's participation needs to be stressed. To be effective, participation in the process and proper training of women in SRI techniques is required.

**Shri Kamlesh** from BRLPS was the next speaker on the topic. Shri Kamlesh emphasized the role of institutions in promoting food security of poor and the poorest. He said that:

- In Bihar, the poor and poorest are landless. Therefore, institutions are important for them.
- To scale up SRI, there is need for knowledgeable persons in SRI (service providers) at village level. Institutions can take up the management and supervision of service providers.
- Another important element is the technology. It is still dominated by men, and women need to be focused on.
- Third, he emphasized the institutional arrangement of public, private and people's partnership for promoting SRI. He cited few examples of involving institutions in promoting SRI or food security. The village-level organizations can take up

technology usage and its effective implementation. Other village-level organizations will take up the activity of collection and distribution of food grains to the poorest. Some other village-level sub-committees can take up social audit function, which will ensure that benefit goes to the needy and the poor.

**The next speaker** was Ms. Asha Chandra from NABARD. She emphasized the following points:

- 1 SHGs should graduate to micro enterprise.
- 2 Land rights for women are important.
- 3 SRI can ensure increase in production, but price realization and storage facilities require attention.
- 4 SHG federations can run procurement and storage centers.
- 5 In Bihar, parboiled rice is very famous. Its processing is very tedious if done at small scale. Therefore, community parboiling center are to be piloted.
- 6 Capacity building of service providers is very important.

Shri Sharda Nath another speaker from NABARD, emphasized the role of government in scaling up SRI.

**Shri Murli from APMAS** also emphasized the role of federations in promoting the interests of landless members. He said that the capacity-building of institutions is very important to ensure food security. For sustainability of institutions, member benefit as well as benefits of institution are critical.

The last panel member speaker was Shri Sanjay Kumar from IGS. He also emphasized the role of SHG Federations in promoting the livelihoods of poor women. The focus of his discussion was that federations could take up the interest of poor and landless in promoting their livelihoods.

The chairperson of the panel summed up the discussion with following words:

To bring women into cultivation, institutional arrangement should ensure following aspects:

- Ownership over process and assets.
- Convergence of various institutions at village level.
- In Bihar, PACS is being reorganized. They could be effectively utilized for storage and distribution apart from their regular credit function.
- NGOs' input is required in marketing, processing, capacity-building, and social audit.

***1:35 pm Lunch Break***

## **Session 6 (2:20 to 3:35 pm): Panel Discussion on Technical Aspects of SRI**

**Chairperson of the Panel:** Shri B. Rajendra, Director of Agriculture.

Panel Members: Shri Anil Verma, PRADAN

Shri S. K Singh, Senior Scientist, ICAR.

Shri Atanu Thakur, Senior Professor, Kolkata University.

Shri Tapas Pati, Manager-Ag/Bds, BASIS

Shri Rajesh Singh, Asst. Manager-Ag/Bds, IGS.

Shri Ajay Kumar, Rice Agronomist

Shri Shilajit Singh, District Agriculture Officer.

This panel also followed the same discussion method as first panelists. All the speakers presented their views on the topic, and finally the chair summed it up.

The first Speaker was **Shri Anil Verma**. The important points presented were:

- System of Rice Intensification is a technique of rice cultivation, and it is not a technology.
- In SRI, by following its six principles, maximum potential of each rice plant is realized, and this leads to increase in yield. Therefore, it is very important to understand the capacity of rice and adherence to the six principles.
- It is the natural quality of rice that 4 to 7 days after sowing, emergence of rice (tillers) takes place. Rice can have up to 12 cycles of tiller growth. In traditional practice, emergence (of tillers), continues until 40 to 45 days. In SRI, it goes up to 65 days.
- The transfer of seedlings from nursery to main field is to be done very carefully. The seedling needs to be planted as it is with its roots.
- In traditional practice, water logging is maintained, which hampers the coming out of tillers from the roots. However, in SRI, water logging is not recommended. Instead, through regular drying and wetting, a flow of oxygen to the roots is maintained properly, and this facilitates the coming out of more tillers.
- Through weeding, proper flow of air to the roots can be maintained. This leads to healthy roots as compared to roots turning black due to absence of oxygen in the traditional method. In SRI, due to regular weeding, water and air both get to the roots.
- SRI is a combination of agronomic practices and rice cultivation. In one acre, there is possibility of 64,000 seedlings. And one kg of rice is equivalent to 14,000 seedlings.
- He also explained about the process of seed treatment: First step is to divide the seed into three parts. After this 2<sup>nd</sup> and 3<sup>rd</sup> part is washed and soaked in water for 15 hours. After that, seed is taken out of water, mixed with Bevestine, and kept in shade.

- He also recommended that organic fertilizers should be used as much as possible since after three years of cultivation, production can start declining.

Second speaker on the topic was **Dr. S. K. Singh from Central Rice Research Institute**. Dr. Singh talked about water requirements, selection of plot and geographical location, nursery raising and seedling transplantation, lying out of the main field, weeding, and the use of organic fertilizers. According to Dr. Singh, rice is an aquatic plant so, water is required but not much. In SRI technique, savings of water are up to 50%.

The important points stressed were:

- With SRI technique, 1/100<sup>th</sup> area is required for nursery raising whereas in traditional method 1/10<sup>th</sup> area was used. In addition, the nursery should be raised 8 inches above the main field.
- Soil remains attached to the seedling roots before planting in the main field.
- Water logging is not recommended since it hampers the free flow of air to the roots. Healthy and strong roots are requisite for getting more number of tillers.
- Use vermin-compost to double the supply of nutrients.
- Weeding is very important. Three to four times weeding should be done. The first weeding is done about 10-12 days after transplantation.
- Seedlings are to be transplanted at a distance of 25cms. The space between the seedlings enables the roots of each plant to get sufficient nutrition.
- Seedling has to be simply put in the field without applying pressure on the roots.

**Shri Ajay Kumar, Rice Agronomist, RAU, Mithapur Farm**, was the third speaker on the topic. He said that SRI is not a new technique. In SRI, thrust is on tiller relationship. The important thing to understand is how it happens and when it happens. As the number of panicles increases, so does the number of grains. In SRI, L-shaped transplanting is done instead of J-shaped as in traditional method of rice transplanting. He emphasized to practice the six principles of SRI strictly. He advocated that SRI is suitable for small and marginal farmers. In Bihar, rice is cultivated in three seasons, and we should try to promote SRI in all the three seasons.

**Shri Atanu Thakur** was the fourth speaker. He shared that in 37 countries the world over SRI is now practiced. However, there is no standardization on the technique. SRI as a practice has evolved as a matter of practical research and not as scientific research. It is a package of practices, and the six principles have to be adopted for better results. The Green Revolution was a pioneer intervention in agriculture and assisted in achieving food security. However, it was a costlier intervention and benefited richer and bigger farmers most. Therefore, he appealed that let's not make SRI mechanized and a costly affair by stressing mechanized weeders and other tools. Even if a farmer adheres to three to four principles, he would get higher yield than with traditional method. A higher yield of 6 to 8 tons is enough for food security of the poor farmer household. Thus, SRI should be pro-poor.

**Shri Tapas Pati from BASIX** said that in India we are not able to scale up SRI because of sticking too rigidly to weeders. He shared his field experiences of promoting SRI in Orissa. He gave the following experience and suggestions:

- Farmers are apprehensive of planting one seedling. In SRI practice, just one seedling is transplanted. He shared that during implementation of SRI, he observed that transplanting one or two seedlings does not affect the yield much. However, if it is more than two, then yield gets affected.
- In place of markers, ropes can be used.
- Weeding at an interval of 10 days is not practical for the farmer. So, first weeding after 15 days and second weeding after 30 days is enough.
- Alternate drying and wetting is to be maintained. However, in case of rainfed farming, the level of water has to be maintained.
- The type of land for SRI is also important. Based on his experience, he advocated focusing SRI on medium lying land instead of upland and lowland.

**Shri Shilajit Singh**, District Agriculture Officer, suggested that SRI training needs to be organized at block level. The other suggestions he put forward were:

- Awareness building about SRI.
- Promote the use of vermi-compost by SRI farmers.
- Promotion of fisheries (fish culture in paddy fields).
- Each block to have a demonstration plot.

**Shri Rajesh Singh from BASIX** based on his experience of promoting SRI in Bihar suggested the following important points that need to be addressed:

- 1 Area specific PoPs are to be developed.
- 2 Nursery management is necessary. Two nurseries should be raised instead of one.
- 3 In case of undulating land, instead of using a roller-marker, rope can be used.
- 4 Timely transplantation is critical. Late transplantation means less number of tillers.
- 5 Plant protection is very important.
- 6 To scale up SRI in Bihar, all the plains areas should be tapped.

Summing up by the chairperson, the Director of Agriculture:

- 1 Transplanting to be done after 8-12 days.
- 2 Between two seedlings, 25cms space to be maintained.
- 3 Use of weeders is important.
- 4 Organic manure is to be used.
- 5 Site selection and water management are important.

## Session 7 (3:40 to 4:55 pm): Strategy for Scaling-up SRI in Bihar

Shri Sandeep Ghosh, NABARD CGM, chaired the panel.

The panelist members were:

- 1 Shri Devraj Behra , State Project Coordinator, BRLPS
- 2 Shri Syed Faiz, Programme Officer, Aga Khan Foundation.
- 3 Shri Biswanath Sinha, Sr. Programme Officer, SDTT
- 4 Smt. Adishakti, Mahila Samakhya
- 5 Shri Arijit Dutta, COO, Indian Grameen Services.

The chairperson started the discussion by stating that agriculture is a state subject. However, he thought that it is really a farmers' subject, and farmers' involvement is necessary. He said that in Bihar, labour cost has increased due to migration. So, the labour-intensity of SRI needs to be looked into. With these words, the panelist members started presenting their views.

The first speaker was **Shri Sayed Faiz from Aga Khan Foundation**. He shared that Aga Khan has worked mostly in dry and rainfed areas of Gujarat and Madhya Pradesh. In Bihar, they have started to work much recently. It has been experienced that agricultural risk in Bihar is different from western regions. He expressed that SRI is an established technique and the operative point is where to do it.

The main issues in up-scaling SRI in Bihar are the following:

- Understanding cropping pattern of farmers is essential. In some parts of Bihar, cash crop like tobacco is more popular among farmers. Since return is also high in that crop, whether farmers will change their cropping pattern and adopt SRI seems not an easy task.
- We have to identify the group of farmers who are willing to adopt SRI. He shared his experience of AKF in Bihar in promoting SRI. AKF had organized Kishan Mela at Pusa Agriculture University. Fifty farmers have attended the Mela and out of this number, 20 farmers adopted SRI.
- Second key point is to identify who are the key actors and their roles in promoting SRI. Who should be the champion of SRI to lead it?
- In West Bengal, it has been seen that after 3 to 4 years of cultivation of rice through SRI, yield started to decline. This is due to decrease in soil nutrient content. To validate this scientifically, some research institutions have to take up issue.
- Government policy support is also required.
- Workshops, seminars and attention given to SRI will lead to its scaling up.
- SRI PoPs need to be localized. Based on field testing, SRI needs be localized and propagated.

The second speaker on the topic was **Shri Biswanath Sinha**. He shared following points about SRI and its practice:

- SRI is in early phase in Bihar. Therefore, some confusion is obvious. One of the panel members had shared that running weeders for women is a tedious job. But he shared that in Orissa, women are running weeders comfortably.
- Adherence to SRI principles is important for realizing increase in yield. In some areas, it has been experienced that practices are being changed and deviated.
- He shared that IWMI has done an extensive study on SRI, and in India, instances of more than 5 years of SRI, cultivation is very less.
- A study needs to be done on SRI practices in India. Apart from focus on the technical aspects, how many farmers have adopted SRI, and what has been the dropout rate needs to be studied.
- In SRI practice, maintenance of soil fertility is a challenge. However, this issue can be tackled by promoting the use of organic manure and fertilizers.
- In scaling up SRI, change in attitude toward its adoption is very important. This change has to be at all levels, whether farmers, funders, promoters of SRI, and other stakeholders. He shared an example of the change in attitude toward SRI. Initially, IARI had apprehensions about SRI. Now they have become positive about the technique.

In his views to scale up SRI, following important points need to be addressed:

- 1 A 'missionary' group needs to be identified who can take leadership role in implementing SRI in Bihar. The various stakeholders in the group could be researchers, farmers, NGOs, trainers, farmer clubs, co-operatives, etc.
- 2 A cadre of human resources at field level needs to be developed. In different states, they have been named differently: master trainers, service providers, SRI Bandhu, subject matter specialists, etc. They will be trained in SRI and will guide and assist farmers in implementing SRI at field level.
- 3 Innovative ways of promoting SRI need to be worked out. For example, showing SRI videos in local weekly markets.
- 4 Training and handholding of farmers are critical.
- 5 Recognition of farmers who have adopted SRI and who are practicing it.
- 6 Collaborative effort of all stakeholders.

**Shri Devraj Behra of BRLPS** was the third speaker. He shared his experiences of promoting SRI in Bihar. They started their SRI work with 128 farmers, and now they are working with 5,000 farmers. However, the journey to this large number was not very easy. Initially when they shared the concept with farmers, they could not get encouraging response. However, with support from SHG women, they were able to pilot it among 128 farmers. After seeing its benefits, other farmers started adopting SRI. Shri Behra emphasized the following points for scaling up SRI:

- For promoting SRI, communication channel is very important. Only explaining verbally is not much effective with new farmers. They need to be shown a movie on SRI techniques and farmers' experiences.

- Exposure visit to SRI plots and farmers at different stages of cultivation is also a must.
- Proper training to farmers and its follow up is important.
- A low-cost HR model needs to be developed for implementation and follow up.

**Smt. Adishakti** from Mahila Samakya was the fourth speaker. She emphasized networking of village-level organization, *aganwadi* centers, etc. for promotion and awareness building and sensitization of SRI technique. She also advocated organizing motivational workshops on SRI, for its planning and implementation. A follow-up workshop should also be required for cross-learning and to keep updated on what other stakeholders are doing and any new developments.

The last speaker on the topic was **Shri Arijit Dutta** from IGS, BASIX. He said that PRADAN and BASIX have shown that SRI is beneficial to farmers of Bihar. Now, a roadmap should be prepared for scaling up. He requested WDC to come up with a roadmap for up-scaling SRI in collaboration with public and private agencies like NABARD, IGS, SDTT, etc. He shared that the collaboration of WDC, Federations and BASIX is a classic example of this partnership for promoting SRI. He also shared that BASIX has a target of promoting 1 million SRI users in seven states. The focus will be on training and developing women service providers.

**Concluding remarks by the Chairperson:** Training and handholding is very important. In states where big farmers were targeted, results were not very encouraging, due to perception that there is a requirement (wrong) of more labour.

- In Bihar, the focus of SRI has to be small and marginal farmers.
- Service providers should be local, young men and women with proper training in SRI.
- SRI demonstration plots have to be developed for scaling up.
- Farmer (of same landholding pattern) meetings have to be organized for sharing and cross-learning.
- Networking among different stakeholders is key. He shared that NABARD has sanctioned Rs.21 lakhs to PRADAN to promote SRI in Banka. NABARD has also asked BASIX in Bihar to submit a proposal for promoting SRI among tribals in Bettiah and Motihari districts.

He concluded the discussion by requesting all stakeholders to cooperate in knowledge sharing and working together to lead SRI to a milestone in Bihar.

### **Session 8 (17:00 to 17:15 pm): Award Distribution Ceremony.**

In appreciation of the contribution made by Federations, farmers, service providers, WDC and IGS staff in promoting SRI in Bihar, WDC distributed prizes under the following categories:

- 1 Best SRI Farmers: Shri Rajesh Ranjan Yadav, Purniea; Shri Mahesh Thakur, Muzaffarpur; Shri Surendra Thakur, Muzaffarpur; Ramchritar Prabhakar, Mohanpur; Umesh Prasad, Barachatti.
- 2 Best Service Providers: Ramakant, Gaya; Deep Narayan, Purniea; Indu Devi, Makdumpur.
- 3 Best Federation President: Smt. Radhika Devi (Konch).
- 4 Best Contribution in Promoting SRI: Shri Manoj Kumar (WDC), Shri Sanjay Paswan (WDC), Shri Sanjay Kumar (IGS), Shri Randhir Prasad (IGS), Shri Rajesh Singh (IGS), Shri Dharmendra Sriwastwa (IGS), Shri Pradeep Ghosal (WDC).

### **Session 9 -17:15 End Note and Vote of Thanks.**

Smt. S. Sidhoo , Chairman cum MD of Women Development Corporation, Patna expressed that women's initiative in promoting SRI in Bihar is very commendable and encouraging. And we can hope reaching a milestone in SRI promotion in Bihar.

The workshop ended with vote of thanks from Shri Pradeep Ghosal of WDC.

=====XXXXX=====

## **ANNEXURE – List of Key Participants.**

1. Ms. S. Sidhoo, Principal Secretary, Welfare and Chairman cum MD, WDC, Patna.
2. Ms. Irina Sinha, Project Director, WDC, Patna
3. Shri Mihir Sahana, AVP Ops.&HR, IGS, Basix ,Bihar
4. Shri Atanu Thakur, Sr. Professor, Kolkata University.
5. Shri Arijit Dutta, COO, IGS, Basix
6. Shri Arvind, Member Food Security Mission, Bihar
7. Shri Biswanath Sinha, Senior Programme Officer, Sir Dorabji Tata Trust, Mumbai.
  
8. Ms. Sabarmati, SAMBHAV, Orissa.
9. Shri Kamlesh Prasad, State Project Manager (IB&CB) BRLPS, Patna
10. Ms. Asha Chandra, Manager, NABARD, Patna
11. Shri J. Murli, Regional Manager, APMAS, Hyderabad
12. Shri Shrada Nath, Manager, NABARD, Patna.
13. Shri Vijay Prakash, Principal Secretary Co-operative.
14. Shri B. Rajendra, Director, Agriculture, GOB
15. Shri Anil Verma, Team Leader, PRADAN
16. Shri S. K. Singh, Sr. Scientist, ICAR, Patna.
17. Shri Tapas Pati, BSFL, Orissa.
18. Shri Rajesh Kr. Singh, IGS, Patna
19. Shri Ajay Kumar, Meenapur Agriculture University.
20. Shri Shilajit Singh, DAO, Aurangabad.
21. Shri Sandeep Ghosh NABARD CGM
22. Shri Devraj Behera, State Project Manager, BRLPS.
23. Shri Sayed Faiz, Programme Officer, Aga Khan Foundation.
24. Ms. Adishakti, Mahila Samakhya, Patna.

**List of All Participants:**

	Name	Designation	Organization
1	Mahesh Prasad Thakur	Farmer	Muzaffarpur
2	Ruby Devi	President	Prerana Nari Shakti Mahila Swalamban SS Ltd.
3	Desh Raj	FDE	Sugam Nari Shakti MSSS Ltd.
4	Deepak Kumar	Student	Patna
5	Anil Kumar	Block Agriculture Officer	Gaya
6	Anil Kumar	Farmer	Gaya
7	Pramod Kumar	Service Provider	BASIX
8	Pramod Singh	Farmer	Muzaffarpur
9	Santosh Kumar	DAO	Muzaffarpur
10	Manoj Kumar	Farmer	Gaya
11	Arjun Prasad	Farmer	Gaya
12	Rinku Devi	President	Chandani Swayamsidha Mahila Swawlambi SS Ltd
13	Kanchan Kumari	CC	Chandani Swayamsidha Mahila Swawlambi SS Ltd
14	Rinku Devi	CC	Chandani Swayamsidha Mahila Swawlambi SS Ltd
15	Gayatri Devi	CC	Budha Swayamsidha Mahila Swawlambi SS Ltd
16	Sharada Devi	President	Budha Swayamsidha Mahila Swawlambi SS Ltd
17	Radhika Devi	President	Nari Mukti swawlambi Mahila Vikas SS Ltd
18	Ramcharit Prabhakr	Farmer	Gaya
19	Ramakant Prasad	Service Provider	BASIX
20	Sunayana Devi	President	Unnati Nari Shakti MSS Ltd
21	Rupa Devi	President	Mala Nari Shakti

			Mahila Swawlambi SS Ltd
22	Rani Devi	President	Aazad Swayamsidha MSS Ltd.
23	Lalita Mishra	CEO	Aazad Swayamsidha MSS Ltd.
24	Indu Devi	President	Meenapur Pragtisheel MSS Ltd.
25	Siya Sunder Devi	President	Asha Nari Swalamban MSS Ltd.
26	Manoj Kumar	Project Co-ordinator	IDF
27	Anju Lata	Project Co-ordinator	IDF
28	K. K.Singh	BAO	Muzaffarpur
29	Adishakti	DPC	Mahila Samakhaya,Bihar
30	Anil Verma	Team Leader	PRADAN
31	Sudha Devi	President	Barabar Swayamsidha Mahila Vikas Swawlambi SS Ltd
32	Indu Devi	Service Provider	Barabar Swayamsidha Mahila Vikas Swawlambi SS Ltd
33	Surender Thakur	Farmer	Motihari
34	Bijay Kumar	President	Nari Kalyan Sansthan
35	Manoj Kumar	DPM	WDC
36	Binay Pratap	AC	WDC
37	Anil Kumar	PC	WDC
38	G.Anthony Raj	PM	WDC
39	Sushil Kr Das	Project Co-ordinator	SSK,Gaya
40	Nitish Ranjan	Project Co-ordinator	Jan Jagran Sansthan ,Nalanda
41	Jhinuk Ray	Asst. Consultant	CRDCM
42	Manoj Kumar	Training Coordinator	CRDCM
43	Kishori Mohan	Executive Director	Muskan
44	Ravi Ranjan	Project Asst.	WDC
45	Yashwant Kr Azad	PM	WDC
46	Praneet Mallick	SPM	WDC
47	Manoj Kumar	Programme Officer	DORD
48	Rajkumar	Press	Punjab Keshri
49	Vinay Kumar	Co-ordinator	GVS

50	Dip Narayan Sah	Farmer	Purnea
51	Rajesh Ranjan	Farmer	Purnea
52	Munni Devi	Farmer	Purnea
53	Anita Devi	Farmer	Purnea
54	Garima Anand	Ex Trainee	BASIX
55	Abhishek Kumar	Photographer	Sandhaya Pravakta
56	Dharmendra Kumar	Reporter	Sandhaya Pravakta
57	Shiv Nath Tiwary		WDC
58	Kamlesh Prasad	SPM	BRLPS
59	Dhirendra Gupta	Reporter	News Anant
60	Md. Jabulav	Press	Press
61	Om Prakash	Press	Press
62	Reena Kumari	Photographer	Free Lancer
63	Dr.Manoj Kumar Mehta	FX	BASIX
64	Dharmendra Srivastava	Mgr.	BASIX
65	Rajesh Singh	Asst.Mgr	BASIX
66	Randhir Prasad	FX	BASIX
67	Ramnath		Grihani Utthan Kendra Patna
68	Vinay Kr Ray		Centre Direct
69	Binay Kr Jha	Reporter	Hindustan
70	Vijay Kumar	Reporter	Rashtriya Sahra
71	Priyanka	AM	BASIX
72	Suresh Kumar	Reporter	Invision Media
73	Shailesh Kumar	Assistant	WDC
74	A.G.Nawaz	Reporter	DTV
75	Sanjeev Kumar	Reporter	DTV
76	Rajiv Ranjan	Reporter	Sacchai Aakhon Dekhi
77	Sanjay Kumar	AM	BASIX
78	Sudip Chaudhry		WDC
79	Narendra Kumar	FX	BASIX
80	Shailendra Kr Singh	AM	BASIX
81	S.P.Paswan	PM	WDC
82	Manoj Kumar	Programme Officer	DORD
83	Sabarmati	Secretary	SAMBHAV
84	Asha Chandra	Mgr	NABARD
85	Vikash Kumar	AC	WDC
86	Md.Ezaz Ahmad	PM	WDC
87	Binay S.P.Singh	DPM	WDC
88	H.P.Singh	AM	BASIX
89	Dr.Atanu Thakur	Senior Lecturer	Calcutta University
90	Pradeep Kumar	SPM	WDC
91	Irin Sinha	PD	WDC
92	Mihir Sahana	AVP	BASIX

93	Bipin Kr. Mishra	TE	BASIX
94	Debaraj Behra	SPM	BRLPS
95	Sarita Singh	SPM	WDC
96	Sri Biswanath Sinha	Sr. Program Officer	Sir Dorabji Trust
97	Arijit Dutta	COO	IGS, BASIX
98	Meena Kumari	AO	WDC
99	Kailash	Member	S.S.V
100	Shalini Singh	Reporter	Zee TV
101	Yogesh Kr. Pandey	Media T/C	IPP-VIII,MCD
102	Kumar Baibhav	B. Mgr	Hotel Chanakya
103	Arvind Kumar	AC	WDC
104	Naresh Kr. Sinha	Member	MSBC
105	Lalit Singh	Member	Sindhia Manav Sansadhan
106	Binay Kumar	President	Nari Kalyan Sansthan
107	S. Mahto	DAO	Nalanda
108	Dr. S.K.Singh	Sr. Scientist	ICAR
109	Sayed Faiz	Program Officer	Aga Khan Foundation
110	J. Murali	R.M	APMAS
111	Sheelajit Singh	DAO	Aurangabad
112	Rajkumari Devi	President	Bhandar SMSS Ltd.
113	Pradeep Kumar	Sahyogi	Bhandar SMSS Ltd.
114	Binay		NV
115	Tapas Kumar Pati	Manager	BASIX
116	Dr.Guru Narain	Secretary	Harizan Adivashi Samnavya Samiti
117	Ajit Kumar	FDE	Jyoti Swayamsidha Mahila Vikas swawlambi SS Ltd
118	Santosh Kr. Tiwari	Programme Man	Jayaprabha Gramvikash Mandal
119	Sanjay Kr. Sinha	AC	WDC
120	Indu Sinha	Executive Director	CENCORD
121	Dr. Arvind Kumar	Officer	DRD
122	Dhirendra Gupta	Reporter	News Anant
123	Sharda Nath	Manager	NABARD
124	Anant Kr Sinha	Block Agriculture Officer	Gaya
125	Dr. Ajay	Scientist	ARI
126	M.B. Sinha		Sir Dorabji Tata Trust
127	M. Singh	Member	Badlao
128	Sri Prakash	Press	Press
129	Md. Jafar	Sub-Editor	Rashtriya Sahara
130	Kaushlendra	MT	Kaushalaya Foundation

131	Rinku Jha	Reporter	I-Next
132	Hemant Kumar	Accountant	APMAS
133	Rajiv Ranjan Kumar	TA	IGS
134	Binod Kumar	Manager	Nirdesh
135	Roshan Kumar	Secretary	Navchetna Kalyan Sansthan